

SHARE:

[Join Our Email List](#)

CHILD CARE FACILITIES FUND

Spring eNews

How We Can Help: LISC Technical Assistance Services

Firstly, we hope everyone is staying safe and healthy and we want to extend our sincerest thank you to all our early educators who work so hard on behalf of the children and families of Rhode Island every single day.

Here at the LISC Child Care & Early Learning Facilities Fund, we seek to improve the quality and capacity of physical space in child care and early learning facilities across the State through local partnerships. Every child and early childhood educator deserves access to developmentally appropriate, high-performing early learning facilities. In these unprecedented, challenging times, we remain committed to this work of supporting you, our partners, as well as building new relationships to accomplish this mission. We want you to know that our staff and consultants are ready and available to be responsive to your questions, concerns, and ideas.



While we look forward to a time when we can be out meeting with you on site and in person, in an effort to minimize the spread of COVID-19 and help keep our communities safe, we are finding creative ways to connect from a distance.

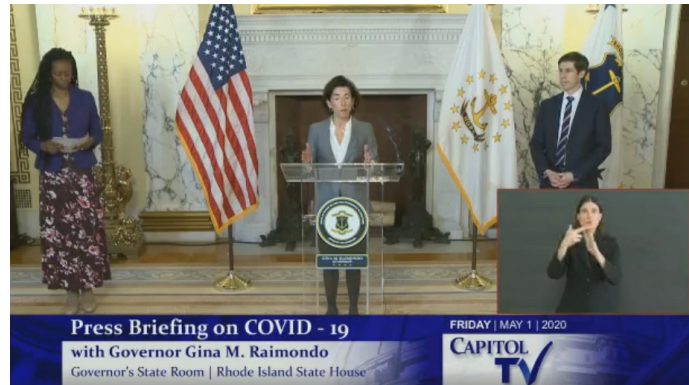
Please reach out using the request for technical assistance button below or visit www.riccelff.org to learn more. Be it through video conferencing, sharing of photos and floor plans, telephone calls, and/or email, we are here and ready to help!



**LEARN MORE AND REQUEST TECHNICAL ASSISTANCE
HERE**

Governor Raimondo Announces Plan to Reopen Child Care

On Friday, May 1st, Governor Raimondo announced a plan for reopening child care starting June 1, 2020 under a modified set of regulations. With that, the State is extending the mandated closure of child care through May 31. The State's plans to reopen child care is aligned with the Governor's broader **Reopening RI plan**. It is noted that all timelines (including the June 1st child care reopening date) are dependent on the status of the COVID-19 crisis and guidance from public health experts.



The Department of Human Services (DHS) is asking that all providers develop and submit a COVID-19 plan for reopening to the DHS Child Care Licensing team by May 22, 2020. For providers who submit a COVID-19 plan to reopen on June 1st, they must receive approval from the Department to begin operating. DHS will be hosting a child care reopening webinar in English on May 6, 2020 at 1PM and in Spanish on May 7, 2020 at 1PM (these will be recorded and shared if you are unable to attend).

To read the announcement, learn more, and access the application form, FAQ, and other resources, visit the **[DHS Child Care Assistance Program \(CCAP\) Provider Resource Page](#)**.

DHS GUIDANCE ON CHILD CARE REOPENING

Centers for Disease Control and Prevention (CDC) - Guidance for Child Care Programs



The RI Department of Human Services (DHS) has released guidance around the process of reopening safe, developmentally appropriate child care for working

families in RI. Given the implications and potential risks of COVID-19, the State is exercising additional precautions to protect the health and safety of children and ensure child care programs adhere to public health protections to prevent the spread of COVID-19.

One item that child care providers will be asked to plan for is adherence to CDC cleaning protocols. [You can view the CDC's guidance around cleaning and disinfecting as well as links to other guidance around the reopening of child care programs here.](#)

VISIT THE CDC WEBSITE

The American Academy of Pediatrics offers additional guidance for early care and education providers for reopening. You can read their FAQ here: [Guidance Related to Child Care During COVID-19](#)



COVID-19 SBA Resources for Child Care Providers

During this challenging time, many child care providers are in need of additional financial resources and supports due to COVID-19 related closures and loss of income. That's why we have compiled some information and resources regarding federal programs that offer providers the opportunity to receive funding through the Small Business Administration (SBA). These programs include:

- Paycheck Protection Program (PPP)
- Economic Injury Disaster Loan (EIDL) and EIDL grants
- Express Bridge Loans Pilot Program

We will keep [this web page](#) updated with information as we learn more details of these programs including tools and resources for utilizing the funds if you are successful in obtaining an SBA loan or grant. Please reach out with questions and we will do our best to help guide and provide information to you based on your individual experience and guidelines set out by the SBA.

LEARN MORE ABOUT SBA RESOURCES

On Wednesday, April 29th, the Economic Progress Institute hosted a panel of presenters including LISC Rhode Island, the Rhode Island Department of Human Services, and the Rhode Island Department of Labor and Training to offer information and answer questions about Child Care Assistance Program payments, Unemployment Insurance, and these new federal loan programs available through the SBA.

You can view the recorded event here:

<http://www.economicprogressri.org/index.php/2020/04/30/webinar-child-care-during-the-covid-19-crisis/>

A few quick points of clarification from the presentation:

- Eligible uses of Paycheck Protection Program funds include *interest* payments on debt obligations that were incurred before February 15, 2020 (this clarification was given specifically for mortgage debt, but wanted to make sure to point out this applies to other debt as well)
- If a program has received or is thinking of applying for PPP funding and also receives federal funding specifically for employee salary expenses, we recommend contacting your funder to find out how PPP is being handled to ensure you are following all rules and regulations and not utilizing two sources for the same expenses. Please be sure to review your funding agreements and maintain strong documentation of all funding sources and expenses paid.

Thank you to the [Economic Progress Institute](#) for organizing and hosting this event!

The Rhode Island Child Care and Early Learning Facilities Fund (RICCELFF) is an innovative public-private partnership dedicated to expanding access to quality child care and early education opportunities throughout Rhode Island. The RICCELFF provides the capital and technical expertise that child care and early learning centers need to improve the quality and capacity of their physical space. The RICCELFF provides a combination of training, technical assistance, grant funding and flexible, affordable financing for a wide range of indoor and outdoor projects including minor renovations or construction of new, state-of-the-art facilities and playground spaces. [Click here](#) to learn more about what the RICCELFF can offer your program.



Building Solutions for Rhode Island's Children