

# City of Providence Early Learning Facilities Improvement Grants



# City of Providence Early Learning Facilities Improvement Grants

Recognizing the need for increased access to high-quality early learning programming, City of Providence Mayor Jorge O. Elorza partnered with LISC RI Child Care and Early Learning Facilities Fund **to administer \$610,900 in facility improvement grants** to Providence-based child care providers for the planning and renovation of physical space during the period of July 1, 2020 to June 30, 2021.



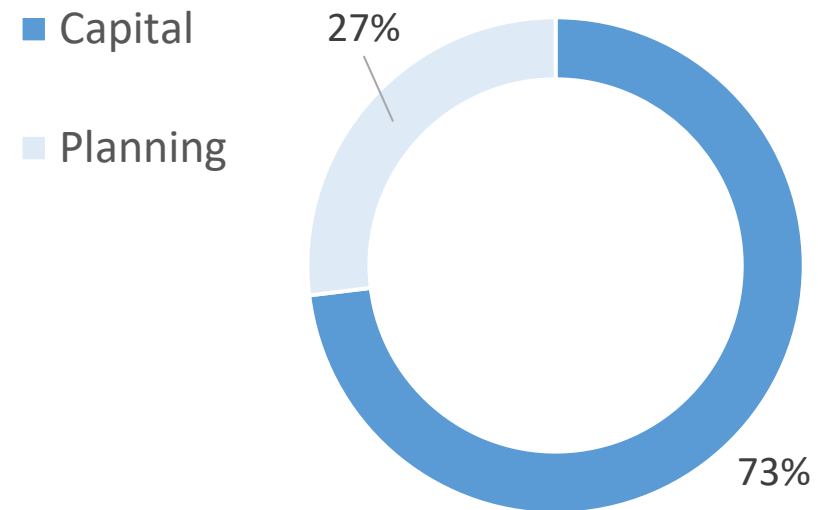
# Purpose of the Facilities Improvement Grants

Grants were provided to child care operators in the City specifically to improve physical space – both indoor and outdoor - with priority given to supporting compliance with existing facility-related child care regulations and remediating areas which pose significant risks to children’s health and safety. Grants were awarded through a competitive application process.

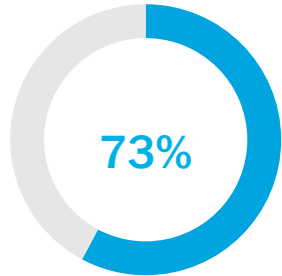
Grants Were Available for the Following Uses:

- 1) Planning** – planning grants provide child care and early learning facilities with resources to develop comprehensive indoor and/or outdoor facility plans.
- 2) Renovation** – capital grants support renovations to address issues related to licensing compliance, health and safety and physical space barriers to quality improvements and/or expansion of quality programming.

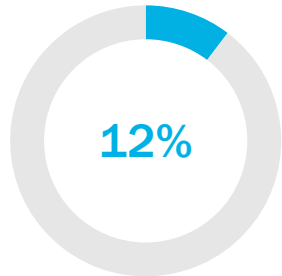
Breakdown of Applicant Proposed Use of Funding



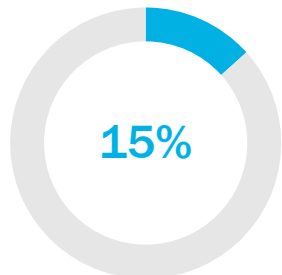
# Applicant Overview



**19 eligible center-based** child care applications



**3 eligible home-based** child care applications



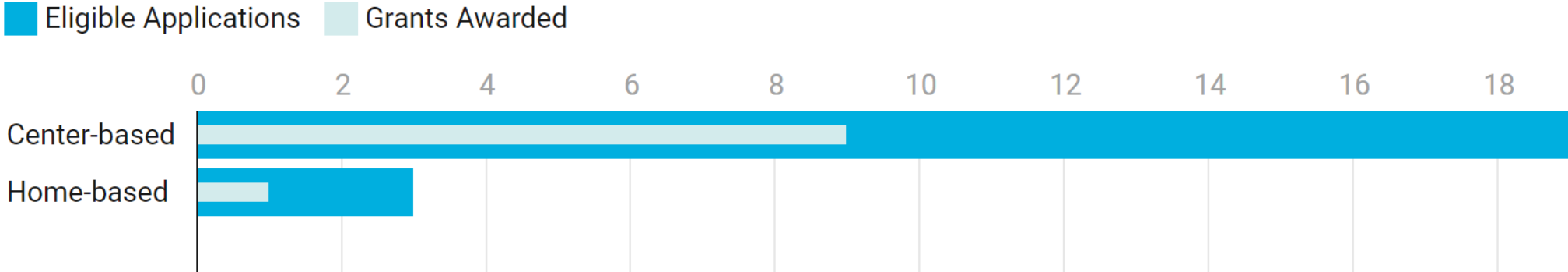
**4 ineligible** applications

The application period closed in August of 2020 with **22 eligible applications** (out of 26 submissions in total).

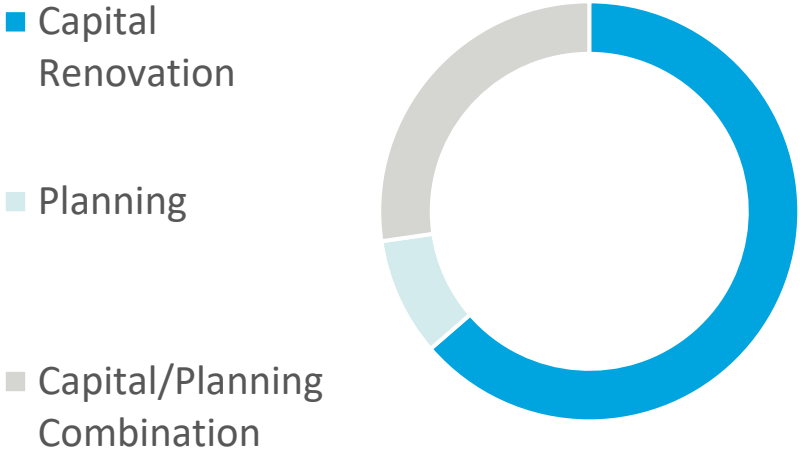
Eligibility requirements included:

- Must be a nonprofit or for-profit licensed child care or early learning provider located in Providence
- Must be a business registered with the Rhode Island Secretary of State operating in good standing in the State of Rhode Island
- Must be providing services to low-income families with public subsidy
- Must be participating in the State's Child Care Quality Rating and Improvement System (BrightStars)

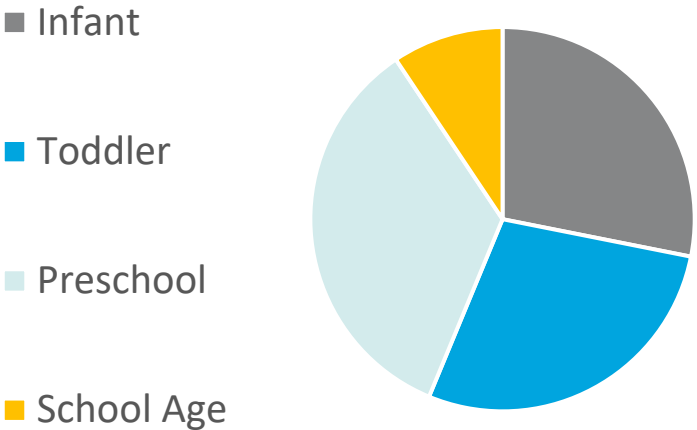
# Grantee Overview



Awardee Use of Grant Funds



Age Groups Served by Grantees



# Grantee Overview

There were 10 Grantees selected through the competitive application process. Grantees consisted of **9 center-based programs** operating across **12 locations** and **1 home-based family child care provider**.

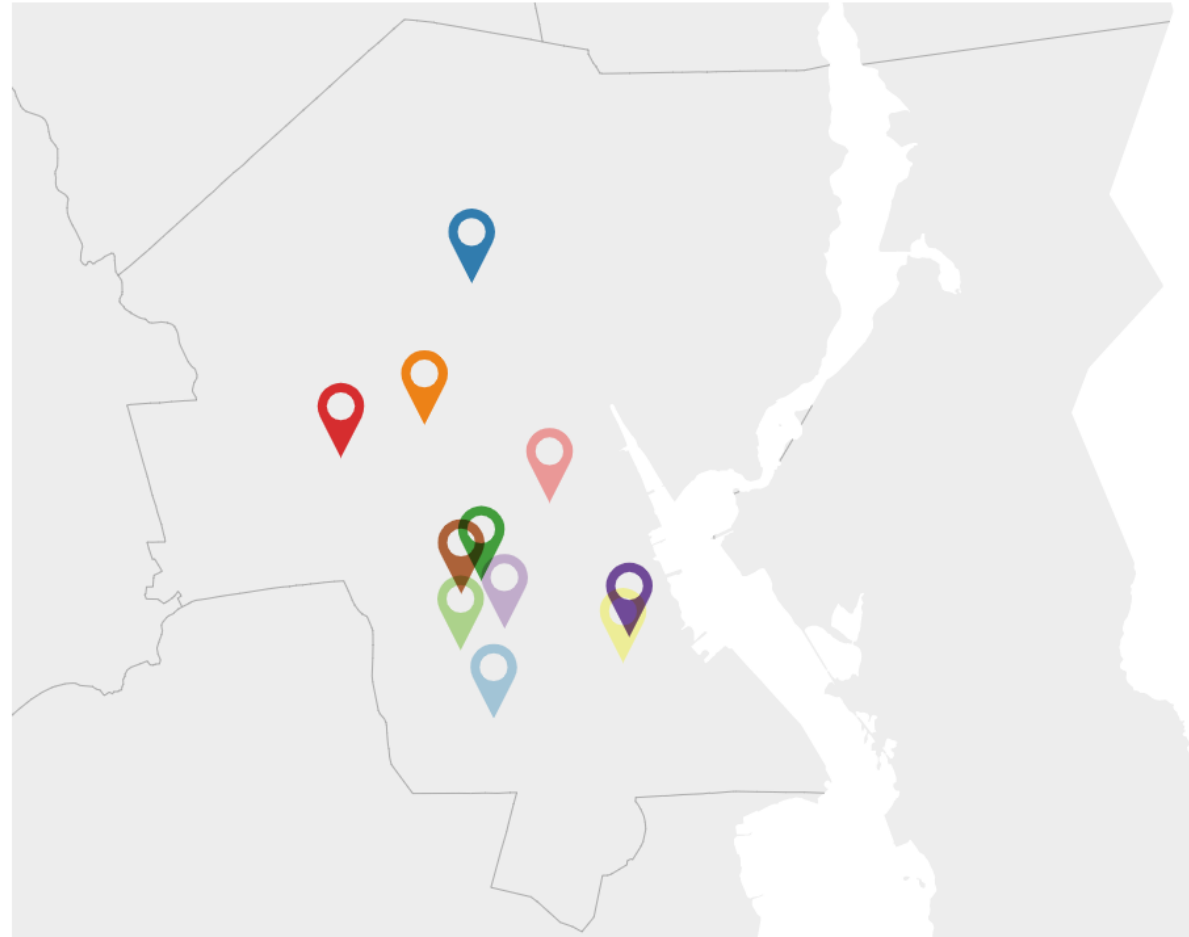
View an interactive version of this map here:

[Interactive Map\\*](#)

*\*Use the zoom controls in the bottom right corner of the interactive map screen to zoom into Providence – click and drag the map to change map position*

## Geographic Location of Grantees

Beautiful Beginnings   Capital City-Smith Hill ECLC   Children's Friend - Carter   Children's Friend @ Dorcas Intl.   Children's Friend @ Friendship   Dr. Day Care - Providence   Emma's Home Daycare   Federal Hill House   Genesis Center   Meeting Street   Roger Williams Day Care Center   West End Community Center



# Grantee Overview

Small scale renovations to space to address **health and safety or quality barriers** impact:

**148** Infant/Toddler slots

**624** Preschool slots

**81** School Age slots

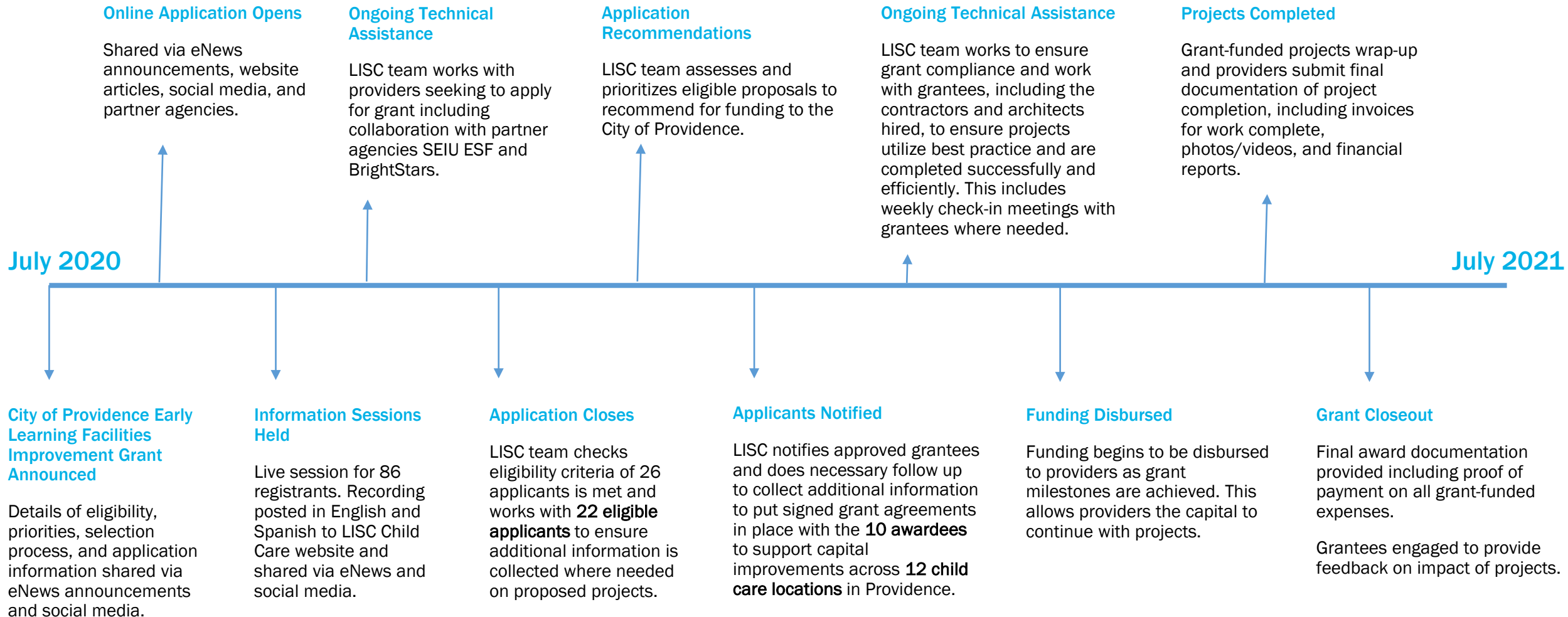
Proposed expansions **increase licensed capacity** by:

**52** Infant/Toddler slots

**18** Preschool slots

Over **300 hours of dedicated, intensive technical assistance** was provided to recipients of grant funding to support groups in facilities planning and renovations and to help ensure project success and grant compliance.

# Program Timeline





# Grantee Projects

# Emma's Home Day Care

Provider Type	Home-based
Age Groups	Toddler, preschool, school age
BrightStars Rating	1
Children Served	8
Grant Type	Capital
Grant Amount Awarded	\$43,700
Expansion	N/A
Project Description	Hiring a contractor for small-scale renovations that will improve the health and safety of the outdoor play space for children attending this program each day. Work includes improvements to surfacing to help eliminate unsafe materials in the space and allow for higher quality, healthier play opportunities. Other improvements will include site work, fencing installation, replacement, and repair, and provision of an approved piece of playground equipment to replace those unsafe items being removed.
Project Status	<b>Project complete.</b>



# Emma's Home Day Care

Outdoor play space surfacing and barriers in need of repair



Before



After

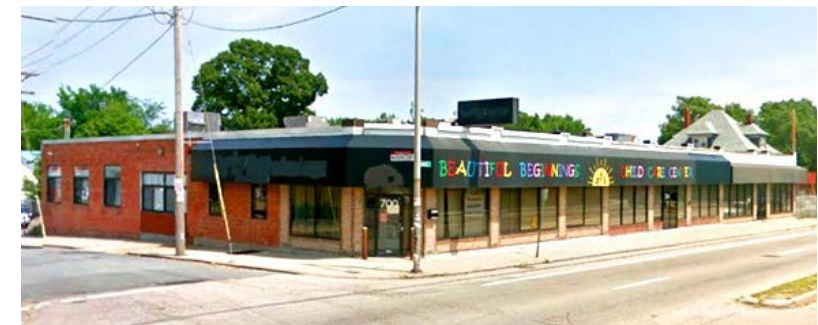


*Fun Fact* - There were roots from a neighbor's tree that needed to be protected and couldn't be removed. The wooden bench served as root protection but also creates a warm seated area for play, rest, and reading.



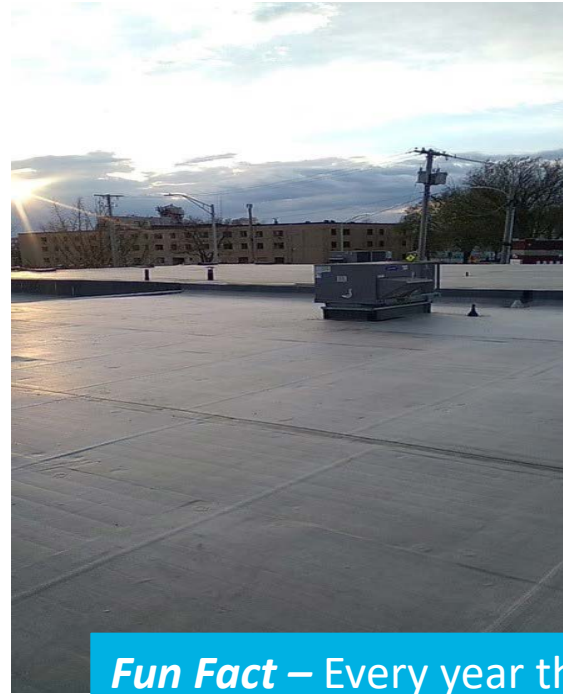
# Beautiful Beginnings

Provider Type	Center-based
Age Groups	Infant, toddler, preschool
BrightStars Rating	4
Children Served	140
Grant Type	Capital
Grant Amount Awarded	\$91,400
Expansion	N/A
Project Description	Beautiful Beginnings child care center is located in a 14,000 sq/ft, one story facility, serving approximately 140 children. The roof at Beautiful Beginnings is in urgent need of repair. They have patched it over the years to extend the life of the roof, but it currently has several leaks that can no longer be fixed. The grantee is hiring a contractor to replace the whole roof at once for minimal disruption to the program.
Project Status	<b>Project is complete.</b>



# Beautiful Beginnings

## Roof Replacement



**Fun Fact** – Every year there were maintenance costs associated with roof repair – this replacement will not only benefit the building but reduce yearly operating expenses.

# Smith Hill Early Learning Center

Provider Type	Center-based
Age Groups	Preschool
BrightStars Rating	5
Children Served	108
Grant Type	Capital
Grant Amount Awarded	\$9,500
Expansion	N/A
Project Description	Repair of drainage issue outside doors to playground, which has an overall impact on health and safety and accessibility. A contractor will install a drain and tie it into the catch basin to prevent flooding from occurring.
Project Status	<b>Project is complete.</b>



# Smith Hill Early Learning Center



**Fun Fact** – Small changes, big impact! Having appropriate drainage can keep a playground safe, allowing water to filter away from the surface, preventing unintentional ponding and contamination or icy spots in the winter.

# Children's Friend – Carter Street

Provider Type	Center-based
Age Groups	Preschool
BrightStars Rating	3
Children Served	102
Grant Type	Capital
Grant Amount Awarded	\$99,900
Expansion	N/A
Project Description	Making necessary improvements to children's bathrooms including installation of new flooring, replacing toilets and sinks with updated fixtures, replacing toilet partitions and doors, replacing ceiling tiles and light fixtures, and new paint.
Project Status	<b>Project is complete.</b>





# Children's Friend – Carter Street

## Sink Upgrades



## Bathroom Upgrades



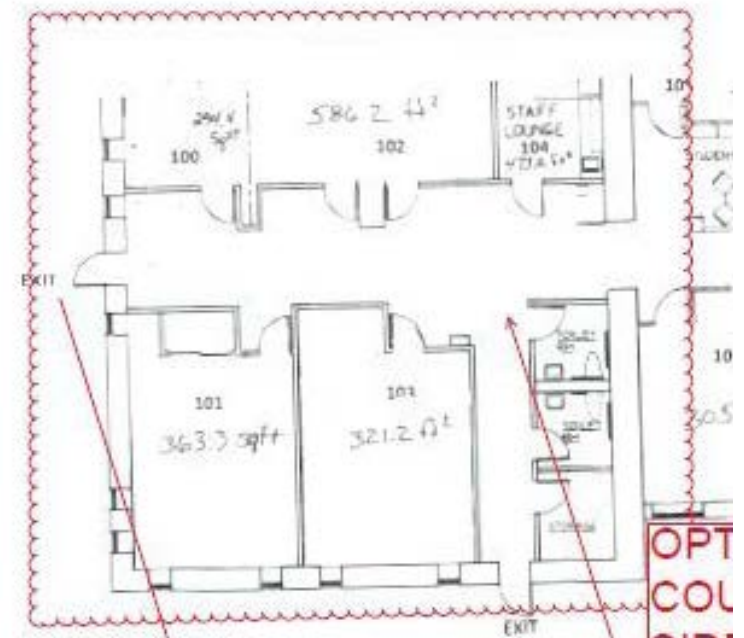
## Lighting Upgrades



**Fun Fact** – Automatic faucets reduce water usage (saving money and energy), they reduce the spread of germs, and they speed up the handwashing process which is especially nice when you have a line of preschoolers!

# Children's Friend at Dorcas

Provider Type	Center-based
Age Groups	Preschool
BrightStars Rating	Probationary license where they have a Head Start classroom at Dorcas International
Children Served	17
Grant Type	Capital
Grant Amount Awarded	\$253,000
Expansion	Yes – seeking to create a new I/T space
Project Description	Conversion of two unused rooms to infant/toddler classroom space (demolishing existing partition, infilling existing wall construction (as required); installing a food prep area; installing a diaper changing area, and modifying the existing playground exits to gain access from remaining egress door)
Project Status	<b>Project Complete</b>

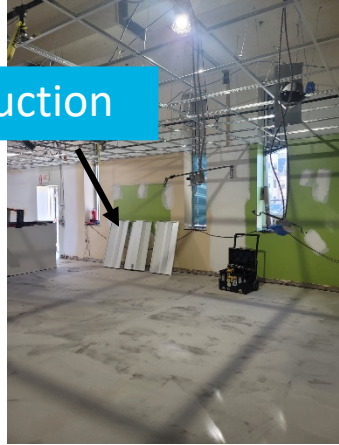


# Children's Friend at Dorcas

New Infant/Toddler room constructed from previously unused space



Mid-Construction



Before



New Outside Fencing



After



After

Remodeled Bathroom



# Children's Friend – Friendship

Provider Type	Center-based
Age Groups	Preschool
BrightStars Rating	4
Children Served	238
Grant Type	Capital
Grant Amount Awarded	\$6,400
Expansion	N/A
Project Description	Increase health, safety, and quality by improving children's bathroom facilities.
Project Status	<b>Project Complete</b>



# Children's Friend - Friendship

Installation of new sinks and expansion of bathroom space



# Dr. Day Care

Provider Type	Center-based
Age Groups	Infant/toddler, preschool
BrightStars Rating	2
Children Served	88
Grant Type	Capital (including architect)
Grant Amount Awarded	\$50,000
Expansion	Yes – an additional toddler classroom
Project Description	Expanding their program to include an additional toddler room for a projected 12 additional enrollment spots. Currently, the program is licensed to serve 88 children ages infant through preschool and consistently is full with a waiting list for the toddler age group. This expansion requires general construction to meet fire and building codes and the State's child care licensing regulations.
Project Status	<b>Project Complete</b>



# Dr. Day Care

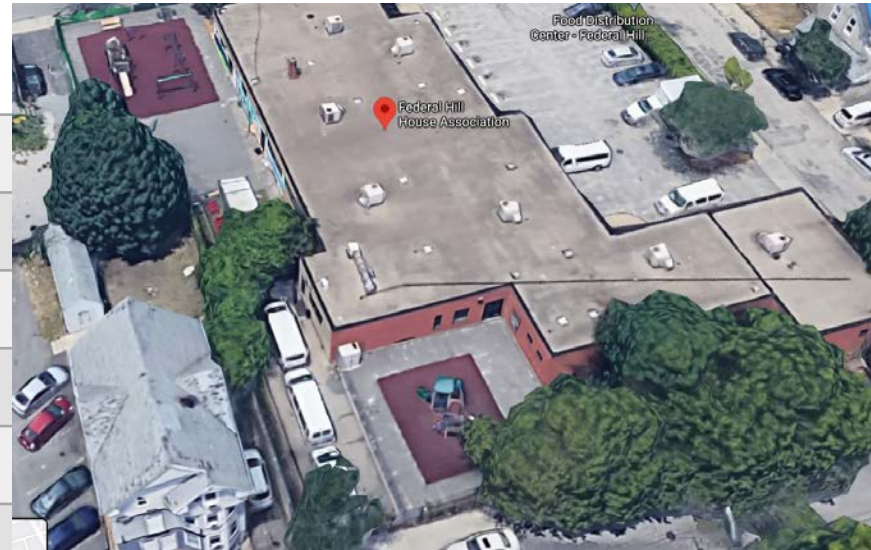
Location of new in-classroom bathroom



**Fun Fact** – This vacant space was converted to a toddler classroom by adding an adult handwashing sink, one toilet and two sinks for use by children, and direct access outside.

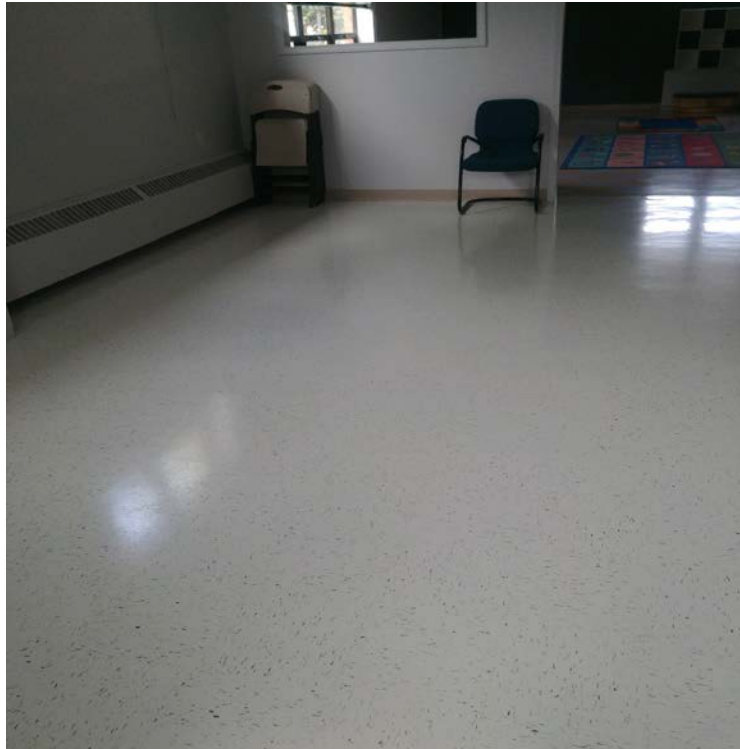
# Federal Hill House

Provider Type	Center-based
Age Groups	Infant/toddler, preschool, school age
BrightStars Rating	3
Children Served	54
Grant Type	Capital
Grant Amount Awarded	\$40,000
Expansion	Yes – I/T and preschool
Project Description	Seeking to license a new classroom for their early learning center located at 9 Courtland Street in Providence, RI. The program serves up to 54 children ages 18 months through five years. In order to prepare the classroom for eight additional infants and toddlers, grant funding will be used to replace flooring and convert the existing school age playground to a new Early Learning Center playground. The exterior conversion includes removal of unsafe equipment, a sun shade, and purchase of a storage shed for equipment and materials for loose parts play.
Project Status	<b>Project Completed</b>





# Federal Hill House



New flooring for new classroom

New fencing and shade for play space



Safe, secure gate



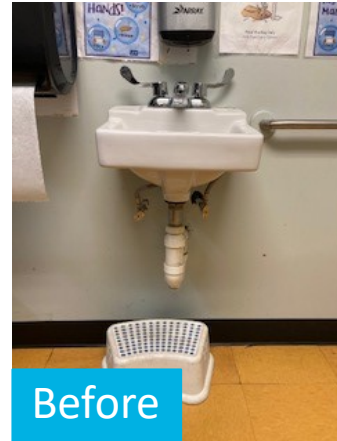
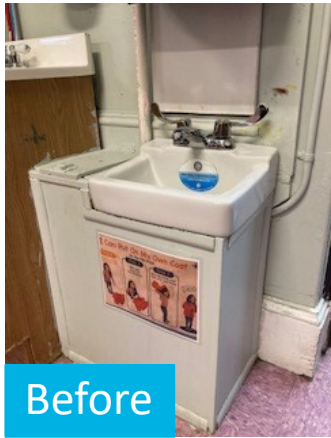
# Genesis Center

Provider Type	Center-based
Age Groups	Infant/toddler, preschool
BrightStars Rating	5
Children Served	36
Grant Type	Capital
Grant Amount Awarded	\$30,208
Expansion	N/A
Project Description	The Genesis Center serves 36 children at their early learning center. The organization is making necessary repairs to the early learning center's plumbing and restroom facilities. This work will include replacement and repair of sinks/faucets, toilets, and a heating unit which is currently leaking water in one of the classrooms.
Project Status	<b>Project Complete</b>



# Genesis Center

## Bathroom facilities improvements and upgrades



# Meeting Street

Provider Type	Center-based
Age Groups	Infant/toddler, preschool
BrightStars Rating	4
Children Served	120
Grant Type	Planning
Grant Amount Awarded	\$30,000
Expansion	Yes – adding 24 I/T spaces
Project Description	Grant funding will support the architectural fees needed to complete COVID-informed design revisions for the forthcoming, 30,000 square foot Center for Early Childhood Development on Meeting Street's Providence Campus.
Project Status	<b>Grant-funded portion of planning work complete.</b>



# Meeting Street

Future Home of Meeting Street Early Childhood Learning Center and Auditorium



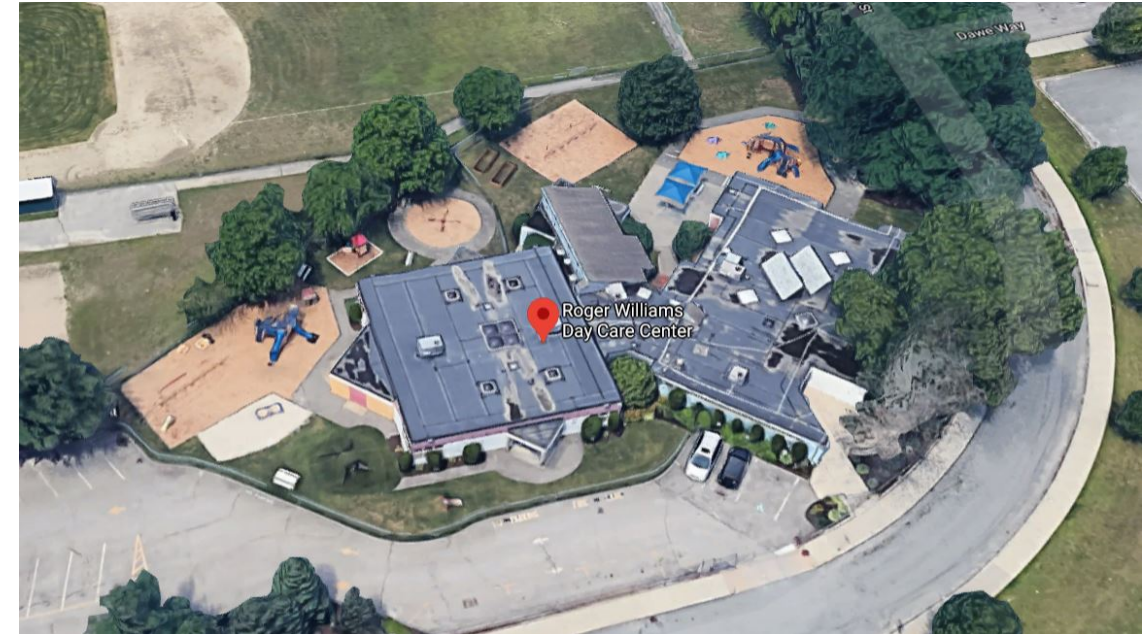
Conceptual site plan

Conceptual rendering



# Roger Williams Day Care Center

Provider Type	Center-based
Age Groups	Infant/toddler, preschool, school age
BrightStars Rating	2
Children Served	130
Grant Type	Planning and Capital
Grant Amount Awarded	\$15,000 (\$2,500 in planning; \$12,500 in capital)
Expansion	N/A
Project Description	Review of the current outdoor playground areas and existing Environmental Rating Scale (ERS) assessments to help in evaluating deficits in safety and function to improve the overall quality for both infant/toddler and preschool spaces. Improvements include addressing unsafe bolts under play structures, play equipment too high from the ground, and play equipment in need of upgrades in order to better engage the children in appropriate play activities that are both educational and fun.
Project Status	<b>Project complete.</b>



# Roger Williams Day Care Center

Sand play with new shade



Lower platform modification



Outdoor hill and tunnel improvements



# West End Community Center

Provider Type	Center-based
Age Groups	Infant/toddler, preschool, school age
BrightStars Rating	1
Children Served	83
Grant Type	Capital
Grant Amount Awarded	\$20,000
Expansion	N/A
Project Description	Replacement of doors in two preschool classrooms, increasing access to natural light and providing a safe locking mechanism – all door replacements also require replacement of frames which are all in poor condition. A ramp needs to be installed outside of the toddler room for direct access outside without the use of stairs
Project Status	<b>Project complete.</b>





# West End Community Center



Before



After



Fun Fact! Replacing these doors not only created a safe and secure interior, it also provided a lot of pleasant natural lighting and view from inside.



Before



After



# Appendix

# Application/Award Process and Information

# Application Process and Information

**Funding Decisions were made by a group of stakeholders including representatives from the following:**

- Rhode Island Department of Human Services, Child Care Licensing
- Local Initiatives Support Corporation
- City of Providence
- Rhode Island Association for the Education of Young Children
- Providence City Council
- City of Providence, Mayor's Office

**Priority Areas for Funding:**

- Addressing major health and safety concerns
- Providing support to programs working to make facility changes that enable them to maintain state licensure
- Providing support to programs working to improve the overall quality of their center
- Providing support to programs with a need to expand their space, especially for those looking to expand preschool and pre-K capacity
- Providing support to programs requiring facility assessment and/or design plans for space improvements

# Application Process and Information

## Program Information

- Applicants provided program information including capacity and enrollment information, BrightStars participation, business structure, etc.
- Applicants provided a written narrative detailing the program's mission, structure, key leadership, and organizational capacity

## Project Information

- Applicants provided a description of the project including proposed budget, written estimates, capacity to complete the project, explanation of how the project aligns with priority objectives, etc.

## Financial Information

- Most recent independent audit, account review, or tax return
- Year-to-date financial statement for the current fiscal year (balance sheet and an income statement/profit and loss statement)
- 12 Month cash flow projection

# Applicant List

West End Community Center, Inc.  
Capital City Community Centers, Inc.  
Children's Friend and Service - Dorcas  
Children's Friend and Service - Hartford  
Children's Friend and Service - Friendship  
Children's Friend and Service - McAuley  
Children's Friend and Service - Carter  
Dr. Day Care II - Providence  
Meeting Street  
Emma's Home Day Care Inc.  
Genesis Center  
Over the Rainbow Learning Center II, Inc  
Roger Williams Day Care Center

Jammat Housing and Community Development Corporation  
Federal Hill House Association  
Children's Friend and Service - Berkshire  
Dr. Day Care II  
Carolina's Home daycare  
The Children's Workshop, Inc.  
Las Avispitas Home Day Care  
Over the Rainbow Learning Center II, Inc  
Roger Williams Day Care Center  
Ms. Carol's Learning Center LLC  
Guillermina Home Daycare  
Anadilia Home Daycare LLC  
Tia Home Day Care

# About the LISC RI Child Care and Early Learning Facilities Fund

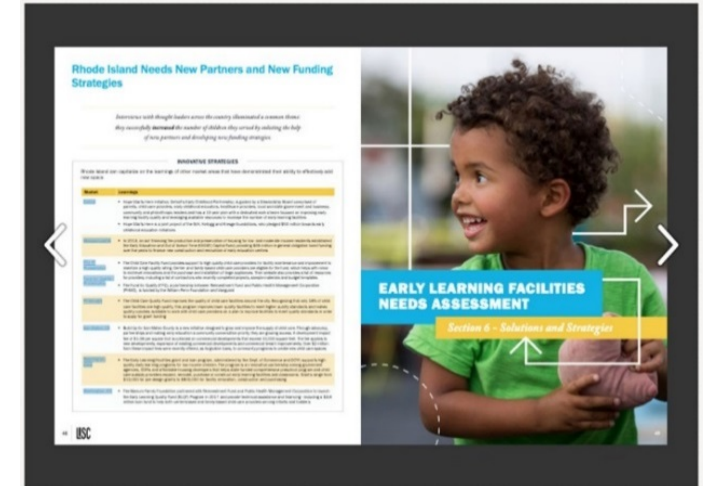
# LISC Rhode Island's Child Care & Early Learning Facilities Fund

For two decades, LISC has operated a dedicated and staffed early learning facilities fund in Rhode Island.

Through this program, we have paved the way for hundreds of centers to improve their facilities through specialized technical assistance, innovative financing, public policy initiatives, and by sharing expertise, positively impacting thousands of children.

Learn more at [www.riccelff.org](http://www.riccelff.org).

- Over **\$24 million** invested in **160 early learning providers** statewide
- **1000+** hours of dedicated, on-site technical support and capacity building to an average of **80** organizations annually
- **Cutting Edge Training** featuring leading experts, nationally recognized resource materials and a newly launched **online training portal**
- **Influenced and guided** statewide policy and funding priorities to support and promote equitable access to quality early education statewide



Also, designed and administered the [2019 Rhode Island Early Learning Facilities Needs Assessment](#)



# Unique Challenges of Early Learning Facilities

---

The development of quality early learning facilities designed to promote positive child outcomes presents unique challenges.



## Cost

Due to specialized nature of space and unique locational requirements it is more expensive than typical commercial construction and traditional debt may not work



## Development

Development is time consuming and generally requires strong technical support and guidance from experts outside of the organization



## Regulations

Space is very specialized and requires careful planning with sound understanding of a vast number of regulations and standards

# A 3-Tiered Approach



## Access to Affordable Capital

- Planning grants to assess feasibility of project
- Recoverable grants for predevelopment
- Loans for construction, renovation, and equipment
- Small business loans with LISC affiliate, [immito](#)
- Linkages to other local and national funders



## Specialized Technical Help

- Staff and consultants to help with project planning
- Access to national expertise



## Capacity Building Training and Resource Materials

- Assistance in building sustainable business and facility operations
- Nationally published resource guides to guide providers through facilities development and best practices

LISC is in a unique position to help address market needs at scale and assemble and strengthen a public-private coalition of partners and employers to shape local, state and federal ecosystems for this work.