



Triplett Preschool

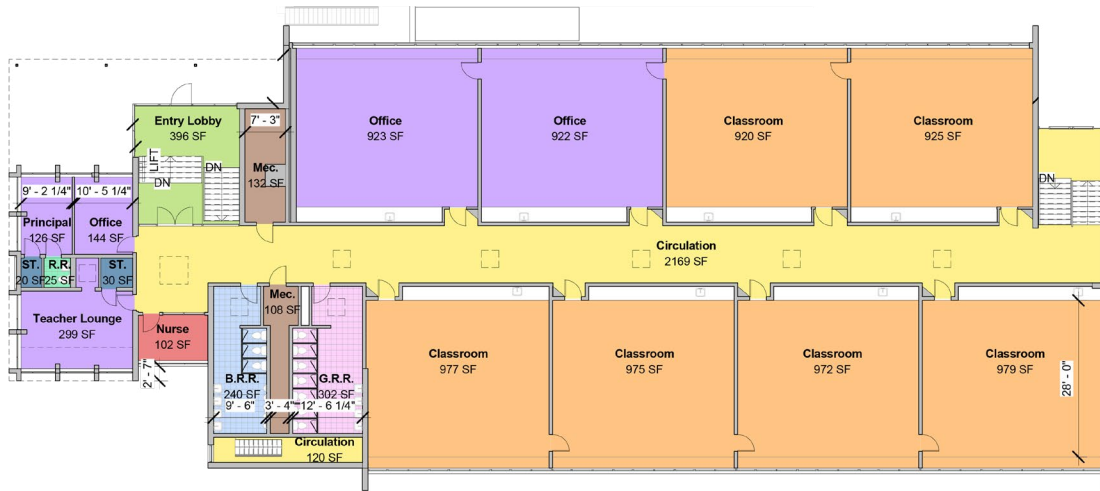
Newport, Rhode Island



Building Exterior Rendering

In 2014, the East Bay Community Action Program, in collaboration with Newport Public Schools, conducted a feasibility study to evaluate the potential for repurposing the closed George H. Triplett School located on 435 Broadway in Newport, RI, into a preschool center offering pre-k and Head Start programming. This was spurred by the lack of available and appropriate space for early childhood programming which was inhibiting program growth.

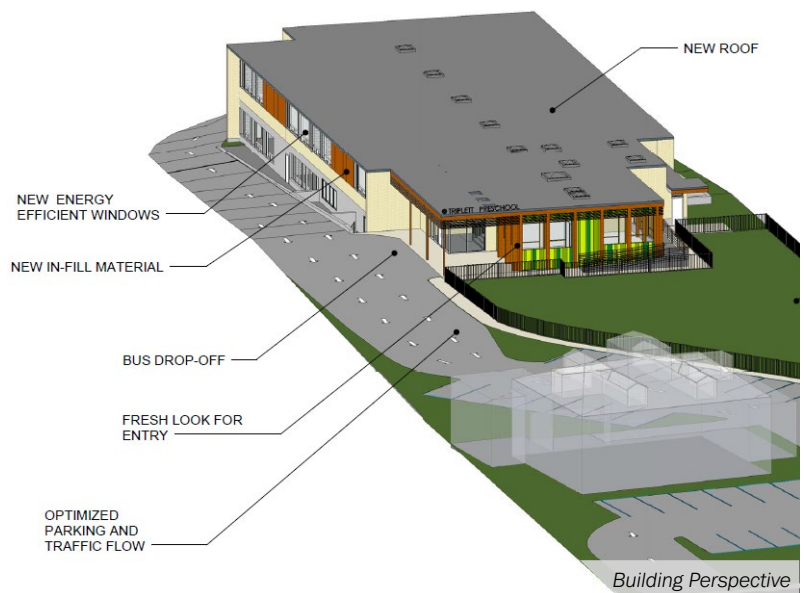
Bringing the 25,365 square foot Triplett School (circa 1960) up to modern standards and codes and making it appropriate for very young children included basic infrastructure repairs and modernizations such as the addition of an elevator, full sprinklering of the building and replacement of HVAC systems. Completed, the facility was designed to house a total of 12 classrooms, each with direct access to restrooms. The plan also incorporated appropriate outdoor play spaces and improved parking and circulation. Projected costs prohibited the project from moving forward.



Proposed First Floor Plan
Design by Newport Collaborative Architects

PROJECT DETAILS

Year Completed	Not complete, conceptual only
Construction Type	Adaptive reuse of vacant building
Estimated Development Cost	\$9,971,254
Square Footage	25,365 SF
# of Children	216
# of Classrooms	12 preschool classrooms serving 3, 4 and 5 year olds
Construction Cost/Child	\$46,163/child
Construction Cost/SF	\$393/SF



Building Perspective



Classroom Interior - Existing