



## Nathanael Greene Elementary School

*Pawtucket, Rhode Island*



*Building Exterior*

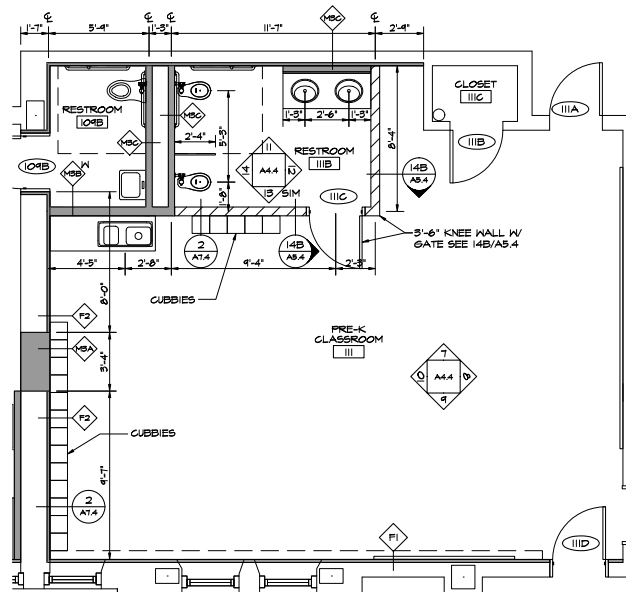
Part of the comprehensive \$56M bonded master plan for health and safety improvements at Pawtucket schools included a complete overhaul and renovation of Nathanael Greene Elementary School, completed in 2018. Renovations included significant improvements to all classrooms, bathrooms, office and ancillary spaces, building envelope and systems in the 65,217 square foot school which was constructed in 1916.

With a financial incentive to include early education from the resources available through the Rhode Island Department of Education's School Building Authority, the Pawtucket School Department capitalized on this by including two dedicated preschool spaces in the design plan. Having had much success with operating state pre-k classrooms at other schools in Pawtucket, the Department saw an opportunity to create high quality preschool at Nathanael Greene by including toilet facilities within the classrooms and near-direct access to the outdoor playground.

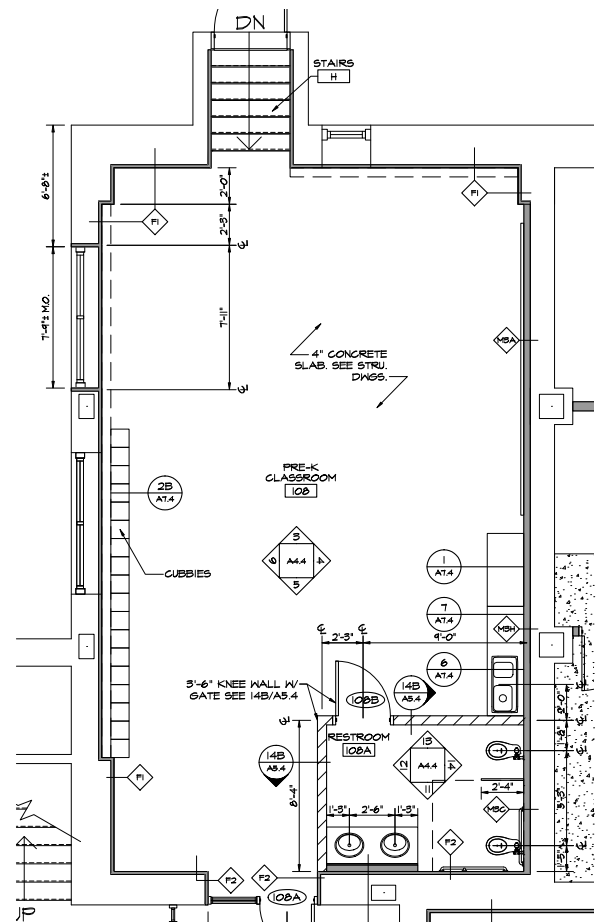


**PROJECT DETAILS**

|                                       |   |
|---------------------------------------|---|
| <b>Year Completed</b>                 | 2018  |
| <b>Construction Type</b>              | Total building renovation of existing school  |
| <b>Development Cost</b>               | \$340,000 (pre-k spaces only - total development project cost is estimated at \$13,700,000)   |
| <b>Sources of Funds/Capital Stack</b> | <ul style="list-style-type: none"> <li>School District Facility Building Reserves</li> <li>Bond</li> <li>School Building Authority (SBA) Funding</li> </ul> |
| <b>Square Footage</b>                 | 1,617 SF  |
| <b># of Children</b>                  | 36  |
| <b># of Classrooms</b>                | 2 state pre-k classrooms  |
| <b>Construction Cost/Child</b>        | \$9,444/child   |
| <b>Construction Cost/SF</b>           | \$210/SF  |



First Floor Plan - Pre-K Classroom 1  
Design by Torrado Architects



First Floor Plan - Pre-K Classroom 2



Classroom Interior - After