



Maximize Your Outdoor Time with Thoughtful Planning & Design

A Training Seminar focused on Playground Space Design

Friday, March 11th

Save the Bay

100 Save the Bay Drive, Providence, RI 02905

8:30am to 4:00pm

Lunch will be provided

Session Overview:

Please join us for a new and engaging training session that will discuss the process of designing playgrounds, the associated costs, and immediate low cost solutions and improvements for your outdoor play area. Hosted by the Rhode Island Child Care and Early Learning Facilities Fund at the Local Initiatives Support Corporation, this training will focus on physical and built space (not outdoor curriculum) and is best suited for professionals such as: directors, owners, education coordinators, facility managers, school leaders and individuals working to support centers and schools in their continuous quality improvement efforts.



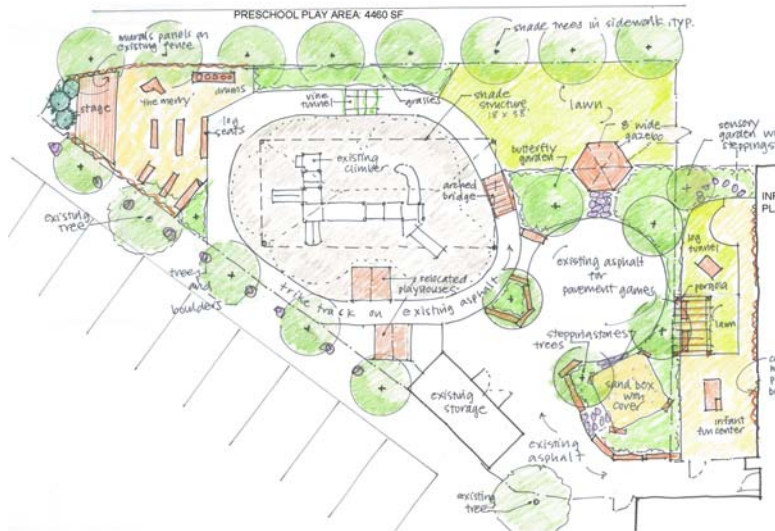
This training session will include presentations from talented child care playground designers from the Northeast who will highlight a few of their innovative playground projects and discuss some of the issues encountered related to: risk tolerance, budget constraints and limitations, vehicular barriers, natural playground design, and low cost solutions with high play value. The session will also be an opportunity to collectively broaden our thinking regarding outdoor play spaces and to discuss immediate low-cost solutions that can be implemented to improve outdoor play safety and quality. At the end of the day participants will leave with concrete ideas for:

- Balancing safety and risk
- Innovative design options and solutions
- Low cost fixes and models that can be implemented immediately
- Integrating natural elements, curriculum and variety into your outdoor play space
- Carving your project into manageable steps and stages

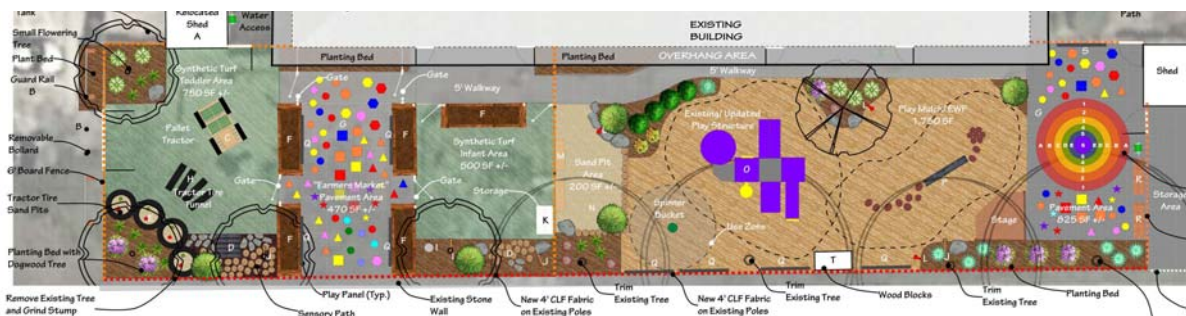


Meet the Presenters:

Erica Quigley is a landscape designer and Certified Playground Safety Inspector at studioMLA Architects, a firm that specializes in designing innovative early learning spaces nationwide. She is in the Master of Landscape Architecture program at the Boston Architectural College. Erica was a teacher naturalist at Mass Audubon for 11 years, where she engaged audiences in outdoor explorations and consulted with schools on their outdoor classrooms and curriculum. She led the development of Mass Audubon's statewide policy document on nature play. Erica's goal is to design spaces for people to play, connect, and experience unexpected joy.



Lucas Murray is the owner of 4-Site Design/Build, the only landscape design service in the Northeast with a fully operational mobile office that allows for integrated on-site design. Luke has more than 20 years of experience designing, maintaining and overseeing children's playgrounds. Prior to opening his own design/build firm in Coventry, Rhode Island he spent nearly two decades working for the Boston Parks Department. Luke is a Certified Playground Inspector who has a particular passion for innovative playground design. He combines a unique design sense with the practicality that comes from his work in maintaining high use play spaces. Luke is an Iraq War veteran and during his deployment his passion for playgrounds became a hallmark of his service. Luke led a volunteer community effort in Taji, Iraq to build a playground for the school children there. His ingenuity resulted in a \$15,000 piece of equipment being donated and shipped overseas and his collaborative style brought together community members, US Soldiers and Iraqi Soldiers to see the project through. Luke brings this same ingenuity to his everyday work here in Rhode Island. Luke has written articles on creative playground design, most recently being featured in *The Magazine of the American Landscape Architects Society*.



Catherine Weaver is the principal and owner of Tupelo Gardenworks in North Kingstown, RI, an award winning small landscape architecture firm, which services both private residential and public clients throughout the country. She holds degrees in both anthropology and landscape architecture from the University of Rhode Island and has worked as a landscape designer for 18 years. She has embraced sustainability as a personal and professional practice. Catherine is the former President of the Rhode Island Nursery Landscape Association. She represents the College of the Environment and Life Sciences on the URI Executive Alumni Board and has recently joined the board of the Wildlife Rehabilitators Association of Rhode Island. She is a member of the American Society of Landscape Architects, Ecological Landscape Association, Northeast Organic Farming Association, RI Nursery and Landscape Institute, RI Natural History Survey, RI Wild Plant Society and RI Environmental Education Association. She has a particular passion for creating outdoor spaces that encourage children to effectively experience nature in a very hands-on way. She is interested in exploring how the school grounds can provide fertile inspiration for a holistic, hands on and experiential learning environment that supports curriculum in STEM, the arts and humanities, as well as social, physical and emotional development. Her firm recently received an APA-RI Award for the South Kingstown High School Courtyard Master Plan, which transformed a rundown courtyard space into a series of sustainable/experiential outdoor learning environments.



Joined by the LISC/RICCELFF team, these talented designers will exhibit their depth of expertise in the fields of early learning, architecture and innovative space design. We hope you can join us!

For more information or to sign up for this training, please visit our website at www.riccelff.org.

LISC is an approved DCYF Professional Development Provider

